

15.Stop Light Switch

A: REMOVAL

CAUTION:

Before performing service on the airbag module, always refer to “CAUTION” of “General Description” in “AIRBAG SYSTEM” section. <Ref. to AB-9, CAUTION, General Description.>

1) Disconnect the ground cable from battery and wait for at least 60 seconds before starting work. <Ref. to NT-5, BATTERY, NOTE, Note.>

NOTE:

For models other than STI model, disconnect the ground terminal from battery sensor.

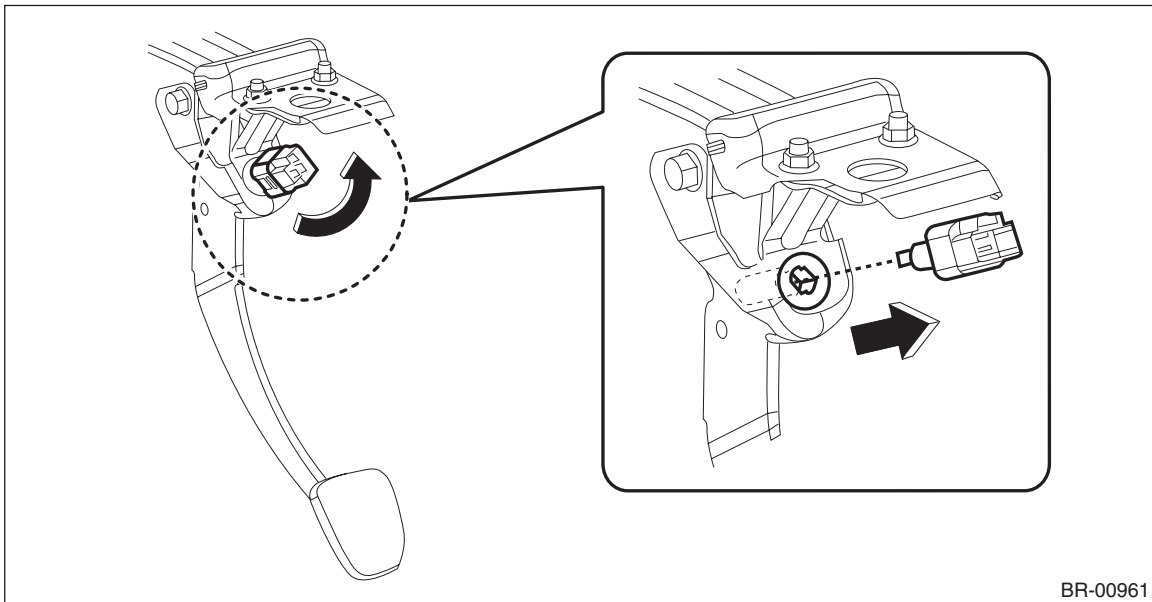
2) Remove the knee airbag module. <Ref. to AB-35, REMOVAL, Knee Airbag Module.>

3) Remove the cover assembly - instrument panel LWR driver. <Ref. to EI-61, REMOVAL, Instrument Panel Lower Cover.>

4) Remove the stop light switch.

(1) Disconnect the stop light switch connector.

(2) Remove the stop light switch by turning it counterclockwise.



BR-00961

B: INSTALLATION

1) Install the stop light switch.

(1) Adjust the stop light switch position, and then secure the stop light switch by turning it clockwise. <Ref. to BR-80, ADJUSTMENT, Stop Light Switch.>

(2) Install the stop light switch connector.

2) Install the knee airbag module.

Tightening torque:

7.5 N·m (0.8 kgf-m, 5.5 ft-lb)

3) Install the cover assembly - instrument panel LWR driver.

4) Connect the battery ground terminal. <Ref. to NT-5, BATTERY, NOTE, Note.>

NOTE:

For models other than STI model, connect the ground terminal to battery sensor.

Stop Light Switch

BRAKE

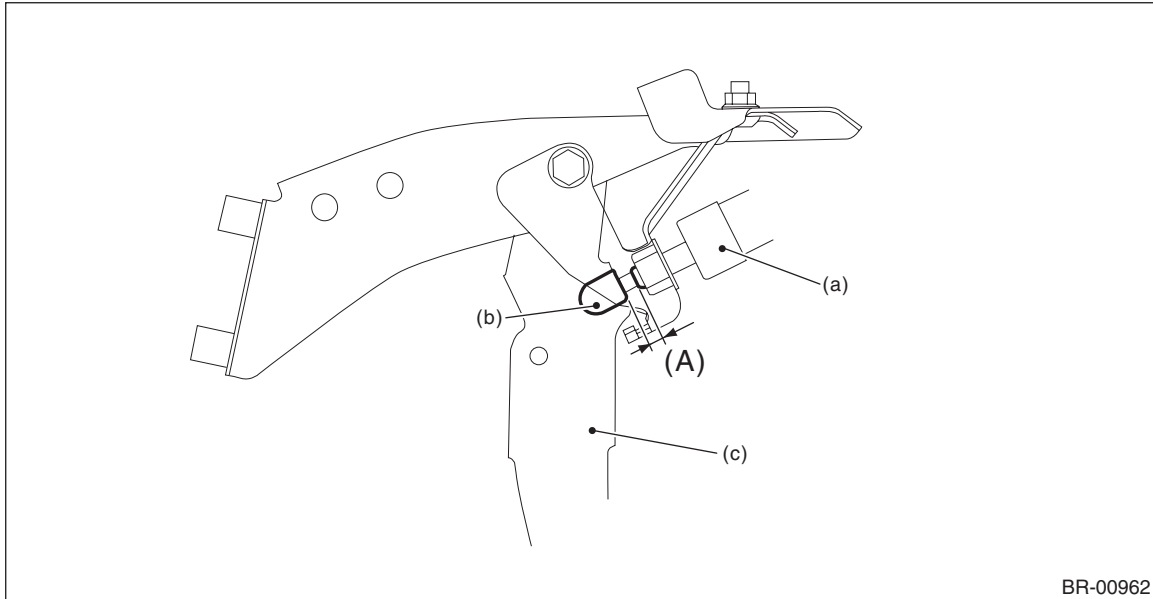
C: INSPECTION

1. CLEARANCE CHECK

1) Measure the clearance between the end of the stop light switch and the stopper.

Specification:

Clearance (A) of the stop light switch: 1 mm — 2 mm (0.04 in — 0.08 in)



(a) Stop light switch

(b) Stopper

(c) Brake pedal

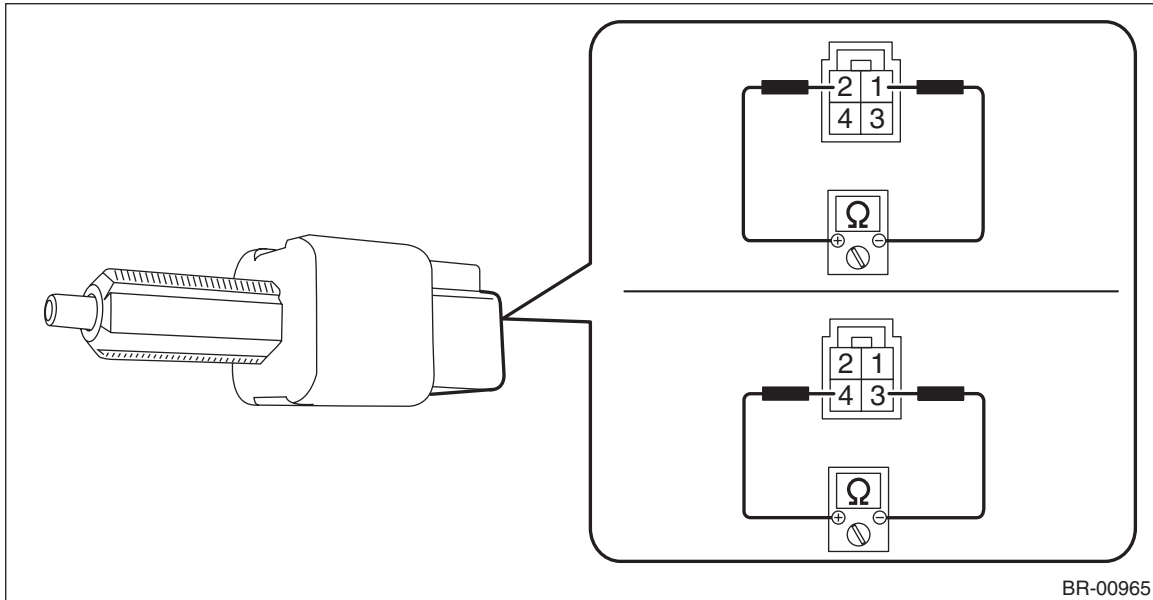
2) Adjust the position of the stop light switch if the inspection result is not within the standard value. <Ref. to BR-80, ADJUSTMENT, Stop Light Switch.>

2. INSPECT THE RESISTANCE

- 1) Disconnect the stop light switch connector.
- 2) Measure the resistance between the stop light switch connector terminals.

Preparation tool:

Circuit tester



Terminal No.	Inspection conditions	Standard
1 — 2	When brake pedal is depressed	Less than 1 Ω
	When brake pedal is released	1 M Ω or more
3 — 4	When brake pedal is depressed	1 M Ω or more
	When brake pedal is released	Less than 1 Ω

- 3) Replace the stop light switch if the inspection result is not within the standard value.

Stop Light Switch

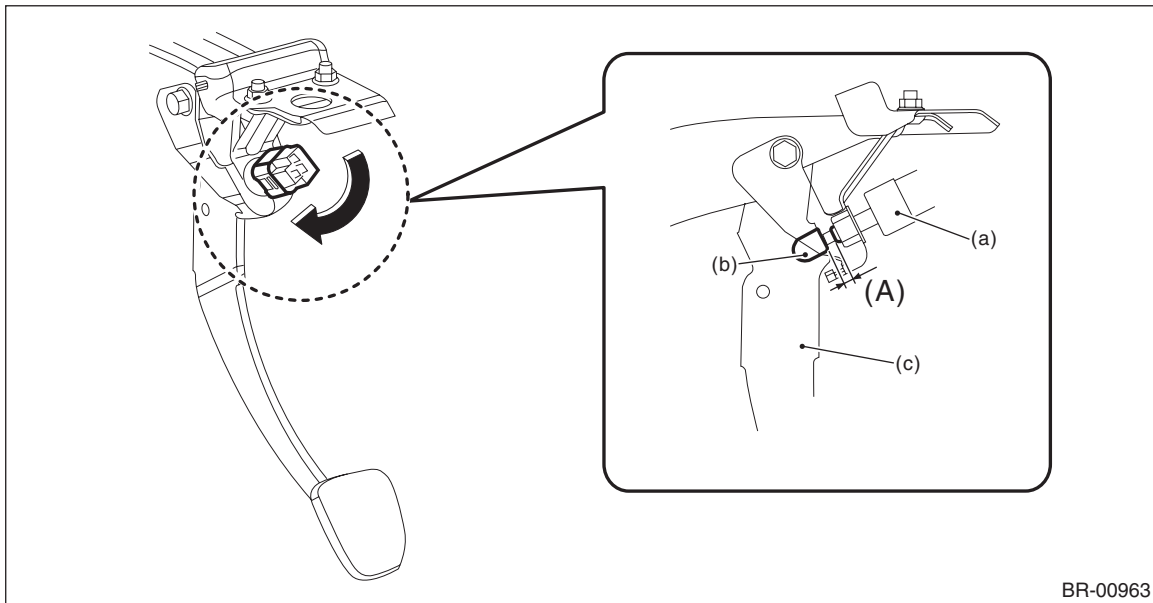
BRAKE

D: ADJUSTMENT

- 1) While pulling up the brake pedal (c) toward you, insert the stop light switch (a) until it reaches the stopper (b).
- 2) Install the stop light switch by turning it clockwise.

CAUTION:

- Turn the stop light switch clockwise when installing so that it can return backward by approximately 1 mm (0.04 in) and clearance is automatically adjusted.
- When pushing the stop light switch against the brake pedal, do not apply excessive force.
- Tighten the stop light switch with a turning torque of 3.0 N·m (0.3 kgf·m, 2.2 ft·lb) or less.
(If it is hard to turn, reduce the switch pushing force and turn it again.)
- Insert until it contacts the stopper, and make sure that clearance (A) of the end of stop light switch and the stopper is 1 mm — 2 mm (0.04 in — 0.08 in).



(a) Stop light switch

(b) Stopper

(c) Brake pedal